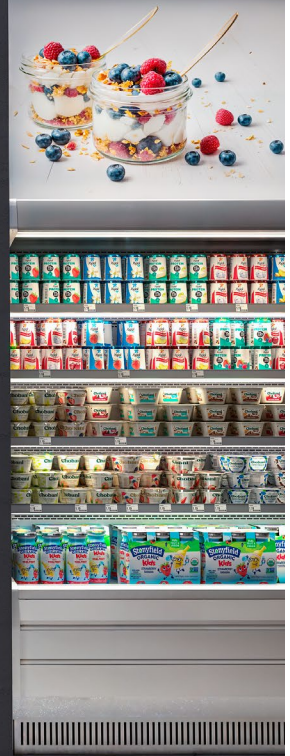


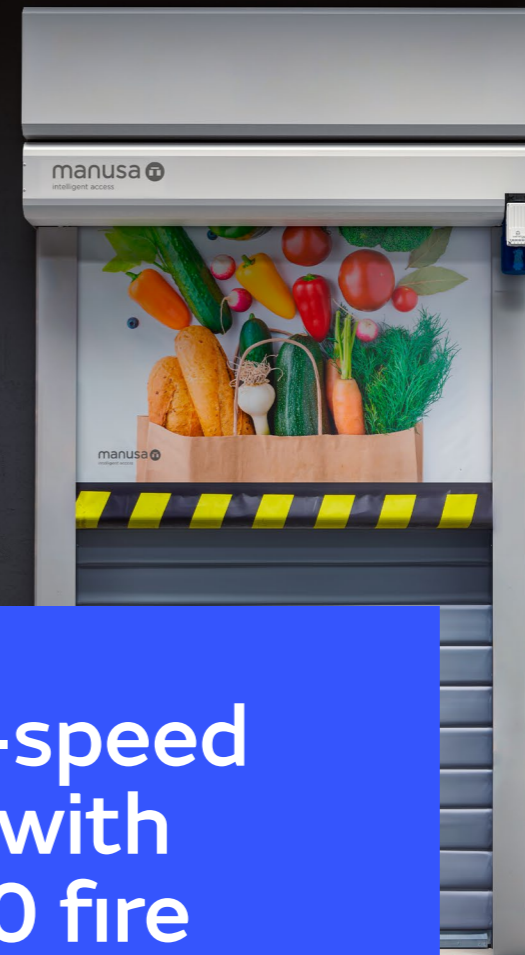
oles



dai



# Access Solutions for Supermarkets



# Optimise flow and improve security in your supermarket

At Manusa, we understand the specific needs of supermarkets in terms of interior access and loading areas.

That's why we offer a wide range of high-speed doors, fire doors, sectional doors and loading dock shelters, designed to provide efficient and secure solutions.

Their adaptability makes them suitable for a variety of applications, from warehouses to loading and unloading areas. With a compact design, our doors optimise space and facilitate logistics. They also provide excellent thermal and acoustic insulation, contributing to a comfortable and efficient working environment. Equipped with advanced sensors and safety mechanisms, our doors guarantee safe and reliable operation, protecting both your staff and your premises.

In addition, depending on the needs of each customer, the fabrics used for high-speed doors can be customised with iconography, images, logos or signage, depending on each case.

Manusa doors are the versatile and efficient solution your supermarket needs.



**Operational efficiency**



**Safety**



**Adaptability**



**Thermal and acoustic insulation**



**Robustness and durability**



**Customisation**

## High-speed door with EI120 fire curtain

A new solution which combines a self-repairing high-speed door with a non-irrigated fire curtain in the same structure, forming a single unit.

It consists of two parallel fabrics, one for operation as a high-speed door and the other as an EI120 fire curtain. Both fabrics are rolled up inside a header. Each of them has its own independent drive system to optimise the operating features.

In normal operation, the fire curtain remains rolled up in the header and the door functions as a standard self-repairing door. If the fire signal is activated, the fire curtain is lowered, separating the two spaces and preventing the fire from passing through.

As the high-speed door is self-repairing, in the event of an impact, the fabric comes out of the guide in order to prevent it from breaking, and when the door lifting mechanism is activated, the side zip is reinserted into the guide, allowing it to operate.

### Advantages

#### Fire safety:

The curtain's EI120 rating provides up to 120 minutes of fire resistance, protecting people and property.

#### Space optimisation:

Compared to a lateral sliding fire door. Since the whole system is in a single structure, this frees up the spaces either side of the door, maximising the storage area.

#### Connection to the safety system:

Connects to the fire alarm and detection system for automatic activation in emergency situations.

# Supermarket high-speed door



Designed specifically for the dynamic and demanding environment, where the daily traffic of goods and also the centre's staff is considerable, this high-speed door offers:

#### Speed and efficiency:

With a quick opening and closing mechanism, it ensures a continuous flow of people and goods.

#### Improved safety:

Equipped with advanced sensors to prevent accidents and ensure safe operation.

#### Durability:

Made of high quality materials, resistant to daily wear and tear ensuring a long service life for the door.

#### Customisation:

The fabric used for this door can be personalised with logos, images or indications, as per the customer's needs.

#### Self-repairing:

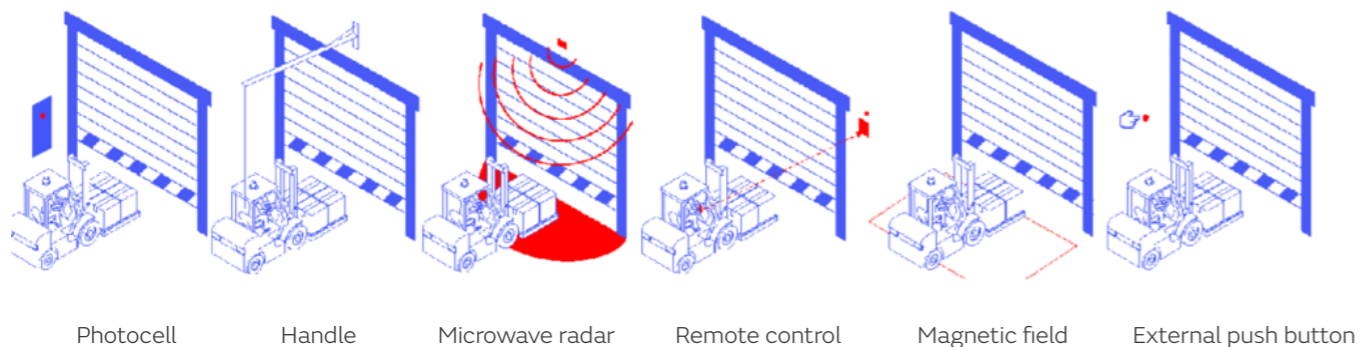
In the event of an impact, the fabric comes out of the guide to prevent it from breaking. When the fabric is pulled up again, the side zip is reinserted into the guide, thus recovering its operation.

#### Symmetry:

The door maintains symmetry, so the configuration and the motor side do not affect its dimensions.



## Accessories



Photocell

Handle

Microwave radar

Remote control

Magnetic field

External push button

## Other access and safety solutions

### Sliding Fire Doors

Industrial sliding fire doors are designed to isolate areas in the event of a fire, preventing fire from spreading to other areas. This fire resistant door model can be combined with high-speed doors for added functionality. Available in single leaf or several leaves format (telescopic). It has EI/60, EI/90, EI/120 ratings and complies with fire resistance regulation UNE EN1634-1. Possibility of inserting an 800x2060 access area.



### Standard sectional door

The sectional door is the best solution for supermarkets. Silent and safe, this door offers effective insulation, with a maximum-security sealed closing system that insulates the inside area. Their optimised design offers a comfortable door with a reduced visual impact in the space where it is integrated. We offer different, customised opening systems that make it possible to perfectly integrate the door into the architectural spaces, adapting to any requirements.



### Loading dock shelter

The loading dock shelter is designed to make it easier to insulate the premises in goods loading and unloading areas in industrial units. It prevents the entry of contaminating fumes, avoids temperature losses, and protects against air currents that could damage the goods being stored. For use at loading points. The Manusa loading dock shelter comprises a front and rear galvanised metal frame, connected by diagonal arms, so that it can fold in on itself if any pressure is applied, before returning to its original position as soon as the pressure is released; in other words, it helps absorb impacts.





### **HEADQUARTERS**

Avda. Via Augusta, 85-87  
08174 · Sant Cugat del Vallès  
Barcelona · Spain

+34 900 827 700  
manusa@manusa.com

**www.manusa.com**

### **FACTORY**

Tramuntana, 3 · Pol. Ind. Llevant  
08213 · Polinyà  
Barcelona · Spain

+34 900 827 700  
manusa@manusa.com

**www.manusa.com**